

# CONSEQUENCES OF INTESTINAL PARASITES

For the pet: Roundworms in vomit; bloody diarrhea; damage to lungs and liver; malnutrition or weight loss; dull, dry haircoat



copyright O'Meara: Pet Informed



Oooo... I hate diarrhea!



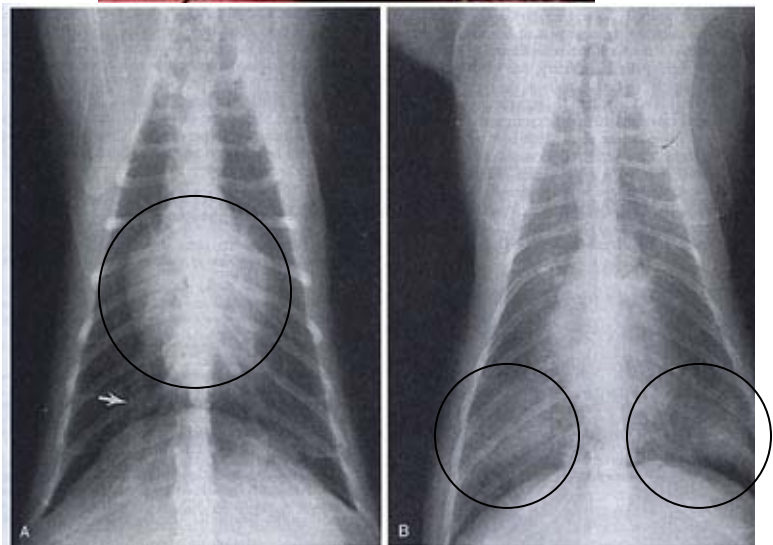
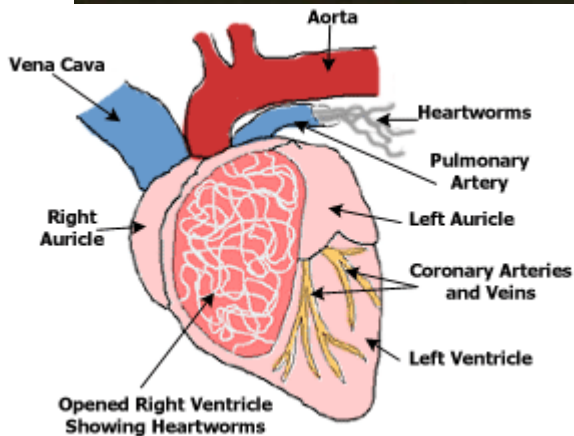
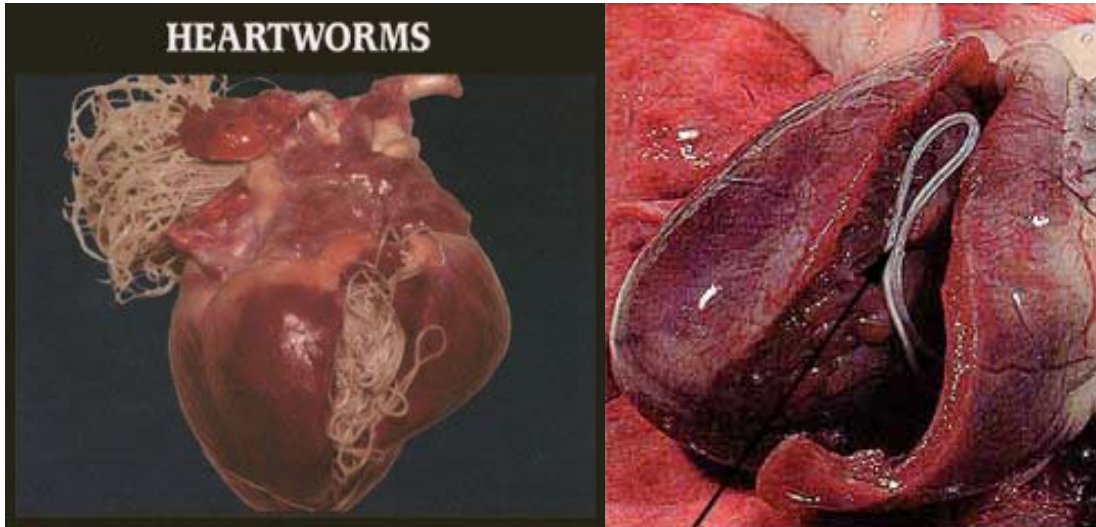
The cost of a yearly stool sample check is minimal. The cost of treating a sick pet is usually much greater, and illness may already have occurred.

For the humans that are exposed to them: Hookworm larval damage to skin; Roundworm larval damage to the eye of a child



# CONSEQUENCES OF HEARTWORM DISEASE

For the pet: Heartworms in a dog's heart on the left and a cat's on the right. The heart cannot work properly with the worms present.



Enlarged heart on the left hand x-ray (compare the gray outline of the heart with the smaller one on the right); lung damage on the right hand x-ray (patchy gray areas within the circles are parts of the lungs that don't contain air. Air shows up as black on an x-ray.)

**Cost of heartworm treatment: \$1000 for dogs. No effective treatment is available for cats, and sudden death is common.**

Caring People Helping Pets

2082 Cheyenne Court, Grafton, WI 53024 • phone: 262-375-0130 • fax: 262-375-4196 • www.bestfriendsvet.com

