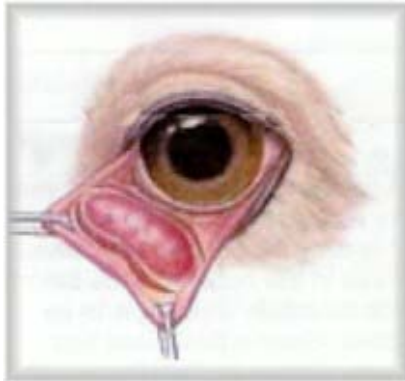


CHERRY EYE



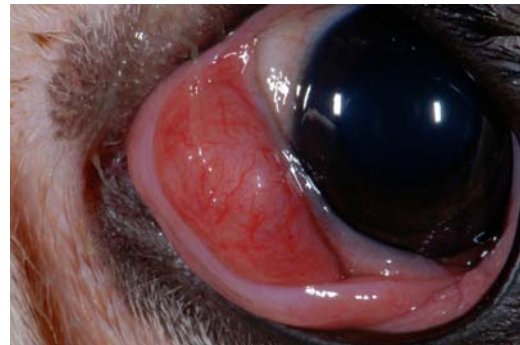
The third eyelid is a protective flap that can come up to protect the eye when it is injured. (Camels use the 3rd eyelid to protect against sand storms.) Within the 3rd eyelid is a gland that produces about 1/3 of the tears that bathe the eye and keep it moist and healthy.

If the gland becomes irritated or infected it will swell and protrude outward. Sometimes eye ointment will take the swelling down enough for it to go back down into place. Usually, however, surgery is required to tuck the gland back down where it belongs and suture it into place.



If one eye develops cherry eye, there's a good chance the

other eye will also develop the same problem. Uncorrected, the eye will be permanently uncomfortable for the dog but we sometimes wait a couple weeks before scheduling surgery to see if the other eye will also become affected. That way we can fix both eyes with just one anesthetic procedure.



After surgery, the 3rd eyelid will be red & swollen for 1-2 weeks but it will eventually return to normal. Occasionally the tiny sutures used to fix cherry eye will break or pull through, especially if the dog rubs or scratches at the eye. This would require a second surgery, so your dog will wear a plastic head cone for 2 weeks following surgery.

EAR HEMATOMA SURGERY

The ear flap, called the pinna, is like a sandwich. It consists of 2 layers of slippery cartilage covered by front and back layers of skin. If a dog or cat shakes its head too hard or too often (or bangs the ear on something) it can cause bleeding and bruising between the cartilage layers. The ear swells up with a pillow effect, with the pressure from the blood tearing the cartilage layers apart. The end result is a very sore ear!

To treat the problem, we make an incision so we can remove all the blood clots and then suture the ear back together. Usually the pet has an ear infection or ear mites, which will need to be treated as well.



Many sutures are required to squish the ear back together so the cartilage layers are touching again. Then we hope they will stick themselves together as they were originally. If this doesn't happen, the ear will fill back up again with bloody fluid once the sutures are removed. We try to irritate the inner sides of the cartilage with

iodine so they will stick better but occasionally surgery has to be repeated because the layers don't hold together well.

Unfortunately, no matter how well things go, the pinna is usually distorted by scar tissue even after it has healed, and it will look curled. Your pet will probably go home after surgery with a bandage and a plastic head collar to prevent scratching at the ear until it has healed.

